



## 11 Verden Close

Peverell, Plymouth, PL3 4BT

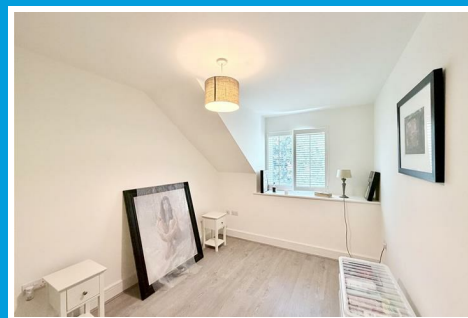
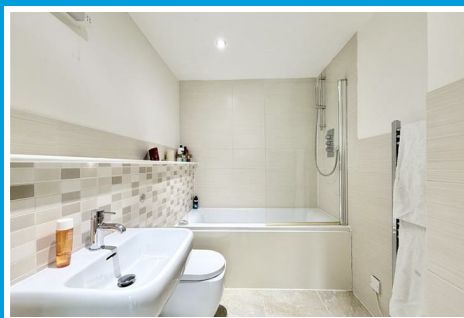
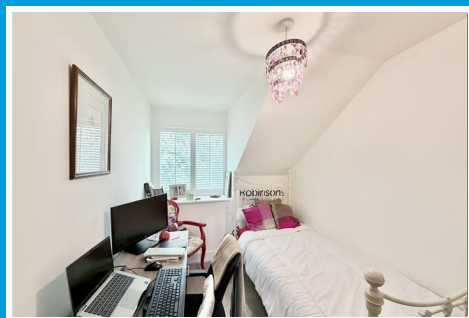
£400,000



# 11 Verden Close

Peverell, Plymouth, PL3 4BT

**£400,000**



## VERDEN CLOSE, PEVERELL, PLYMOUTH, PL3 4BT

### ACCOMMODATION

Entrance has uPVC obscured double-glazed door which opens up into the entrance hall.

### ENTRANCE HALL

16'10" x 6'6" (5.14m x 1.99m)

Staircase rising up to the first floor landing. Obscured uPVC double-glazed window to front. Grey wood effect laminate flooring. Doors open into a cloakroom, kitchen/diner & into the integral garage/utility room. Under-floor heating.

### CLOAKROOM

7'1" x 2'8" (2.18m x 0.82m )

Matching suite of close coupled wc with hidden cistern. Obscured uPVC double-glazed windows to side. Wall-mounted wash hand basin with tiled splash-back & tiled floor. Extractor fan. Under-floor heating.

### INTEGRAL GARAGE/UTILITY

16'9" x 9'2" (5.12m x 2.81m )

Matching base & wall-mounted cupboards. Roll edge laminate work surface with space under for a washing machine & tumble dryer. Up & over door. Light & power available.

### KITCHEN/DINER

16'4" x 13'4" (4.98m x 4.08m )

Matching dual-toned base & wall-mounted units to include integrated oven, fridge/freezer & dishwasher. Roll edge laminate work surfaces have inset 4 ring gas hob & stainless steel hood over. 1.5 bowl sink unit with mixer tap. Under cupboard lighting & ceiling spotlights.

Space for a dining table. Tiled floor. uPVC double-glazed window to rear. uPVC double-glazed door which opens up to the rear garden. Under-floor heating.

### FIRST FLOOR LANDING

uPVC double-glazed window to the side with fitted shutters. Doors leading through to the lounge & bathroom. Shelved airing cupboard with manifolds. uPVC double-glazed window to the front with a window seat and fitted shutters. Staircase rising up to the second floor landing. Grey wood-effect laminate flooring. Under-floor heating.

### LOUNGE

15'0" x 13'4" (4.59m x 4.07m)

Grey wood effect laminate flooring. Two uPVC double-glazed windows to the rear both with fitted shutters. uPVC double-glazed door which opens onto a balcony. Under-floor heating.

### BALCONY

Ample space to sit out on.

### BATHROOM

9'3" x 6'2" (2.84m x 1.9m )

Matching suites of panelled bath with fitted shower. A close coupled wc with hidden cistern. Wall-mounted wash hand basin. Chrome heated towel rail. Tiled floor. Part tiled walls. Ceiling spotlights. Extractor fan.

### BEDROOM TWO

11'9" x 9'4" (3.59m x 2.86m )

uPVC double-glazed window to front with a window seat. Grey wood effect laminate flooring. Under-floor heating.

## SECOND FLOOR LANDING

uPVC double-glazed window to side with fitted shutters. Doors leading through to the 3 bedrooms, wc & boiler cupboard with Valliant combination boiler. Grey wood effect laminate flooring.

## BEDROOM ONE

16'4" x 12'5" (4.98m x 3.81m )

uPVC double-glazed windows to the front with fitted shutters. Shelved storage area with hanging rail. Open storage area to one side. Grey wood effect laminate flooring. Under-floor heating. Door to en-suite.

## EN-SUITE

7'1" 5'5" (2.17m 1.66m )

Matching suite of twin walk-in shower. Close coupled wc with hidden cistern. Wall mounted wash hand basin. Chrome heated towel rail. Extractor fan. Tiled floor. Part-tiled walls.

## BEDROOM THREE

11'9" x 8'7" (3.6m x 2.64m)

Grey wood effect laminate flooring. Under-floor heating. uPVC double-glazed window to the rear with fitted shutters.

## BEDROOM FOUR/STUDY

12'2" x 7'1" (3.71 x 2.18m)

uPVC double-glazed windows to the rear with fitted shutters. Grey wood effect laminate flooring. Under-floor heating.

## BATHROOM

5'2" x 3'11" (1.58 x 1.2m )

Matching suite of close coupled wc with hidden cistern. Wall-mounted wash hand basin. Part-tiled walls. Tiled floor. Extractor fan. Wall-mounted light & shaver point.

## OUTSIDE

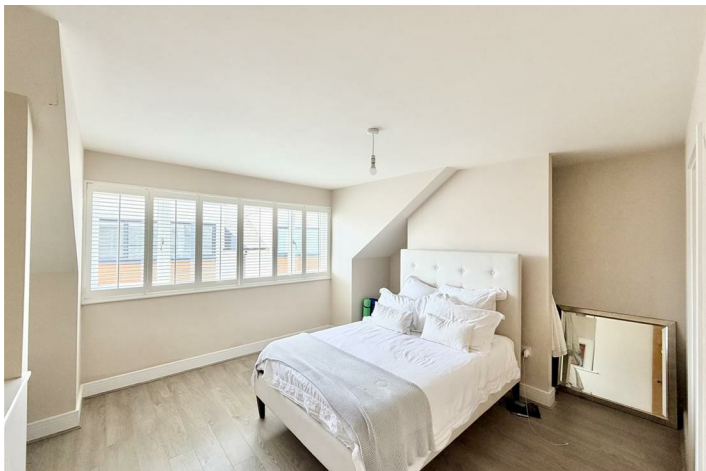
Enclosed garden to the rear with paved patio seating area. Raised planters towards the rear boundary with some inset shrubs and plants. A benched seating area. Path runs around the property to a wooden gate giving access out to the driveway.

## COUNCIL TAX

Plymouth City Council  
Council Tax Band: D

## SERVICES

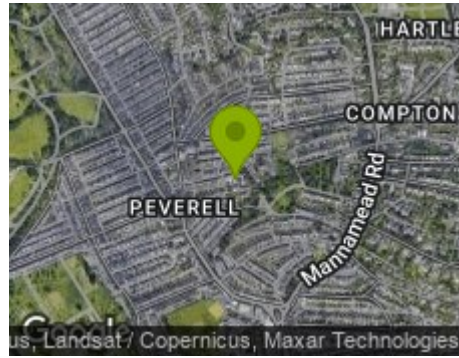
The property is connected to all the mains services: gas, electricity, water and drainage.



## Road Map



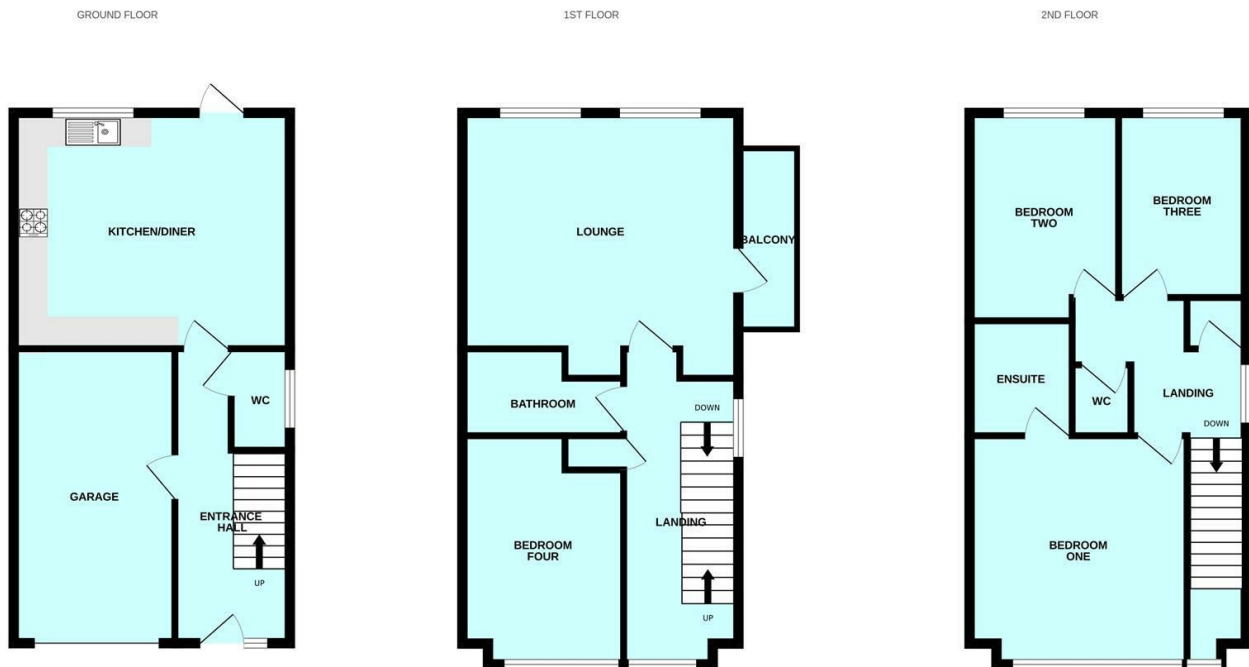
## Hybrid Map



## Terrain Map



## Floor Plan

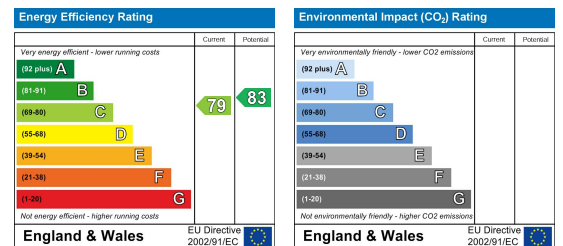


Made with Metropix ©2026

## Viewing

Please contact our Plymouth Office on 01752 664125 if you wish to arrange a viewing appointment for this property or require further information.

## Energy Efficiency Graph



These particulars, whilst believed to be accurate are set out as a general outline only for guidance and do not constitute any part of an offer or contract. Intending purchasers should not rely on them as statements of representation of fact, but must satisfy themselves by inspection or otherwise as to their accuracy. No person in this firm's employment has the authority to make or give any representation or warranty in respect of the property.